

# ECHOLIS

A QUARTERLY BULLETIN OF LISIE MEDICAL AND EDUCATIONAL INSTITUTIONS, VOL-1, ISSUE 1, APRIL - JUNE 2013

CARE  
with  
LOVE



for private circulation only





**LISIE HOSPITAL**

Ernakulam North, Kochi - 682 018, Kerala, India  
Ph: 0484 2402044, 2400812, Fax: 0484 2403877  
Email: [contact@lisiehospital.org](mailto:contact@lisiehospital.org)  
Web: [www.lisiehospital.org](http://www.lisiehospital.org)

---

**Managing Editor**

Fr. Thomas Vaikathuparambil

**Editor-in-chief**

Prof. Usha Marath

**Consultant Editors**

Fr. Paul Kottackal

Fr. Varghese Assin Thaiparambil

**Associate Editors**

Dr. Babu Francis

Sr. Vida MSJ

Mr. Sajeew Jacob

**Editorial Board**

Mrs. Sumathi.P.V

Mrs. Reena.V.I

Sr. Elsy MSJ

Mr. A.R.Lopez

Mrs. Ruby Paul

Miss. Ashitha Mary George

**Finance**

Mr. M.J. Aprem

**Circulation Manager**

Mr. Anti Jose

**Photo**

Mr. Jijo Chacko

**Layout and Design**

Info Kerala Communications Pvt. Ltd.

## From the Desk of Bishops



**കൈകോർത്തു മുനേനം**

കേരളത്തിലും പുറത്തും വളരെയധികം അറിയപ്പെടുന്ന ലിസി ഹോസ്പിറ്റൽ ആതുരശുശ്രൂഷാരംഗത്ത് പുതിയ ചാലുകൾ തെളിച്ച ഒരു മുന്നേറ്റമാണ്. എറണാകുളത്തിന്റെ ഹൃദയഭാഗത്തായിരിക്കുക മാത്രമല്ല വളരെ മിതമായ നിരക്കിൽ ഗുണമേന്മയേറിയ വൈദ്യശുശ്രൂഷ നൽകുവാനും ലിസിക്ക് സാധിച്ചിട്ടുണ്ട്. അതുമാത്രമല്ല ലോകത്തിന്റെ നാനാഭാഗങ്ങളിലും പോയി വളരെ വിശിഷ്ടമായ രീതിയിൽ നേഴ്സിംഗ് സേവനം നൽകുന്ന ആയിരക്കണക്കിനു മക്കൾക്ക് ജന്മം നൽകിയ അമ്മ കൂടിയാണ് ലിസി ആശുപത്രി. ജീവിതം സേവനമാക്കിയ ഒത്തിരിയേറെ വൈദികരുടെയും സിസ്റ്റേഴ്സിന്റെയും ഡോക്ടേഴ്സിന്റെയും നേഴ്സുമാരുടെയും മറ്റു സഹശുശ്രൂഷകരുടെയും കൂട്ടായ പരിശ്രമത്തിന്റെയും ഹൃദയാലുത്വമാർന്ന സേവനത്തിന്റെയും സഹനമാർന്ന ജീവിതചര്യയുടെയും ഫലമാണ് ലിസിയുടെ സൽപ്പേരും പ്രസിദ്ധിയും. പരസ്യത്തിന് ഒരു പൈസാപോലും മുടക്കാതിരുന്നിട്ട് കൂടി ലിസിയുടെ സേവനത്തിനായി നാടിന്റെ നാനാഭാഗങ്ങളിൽ നിന്നായി ആളുകൾക്കെത്തുന്നു. അവർക്ക് നല്ല സേവനം, കുറഞ്ഞ സമയംകൊണ്ട്, മിതമായ നിരക്കിൽ, മനുഷ്യാചിതമായ രീതിയിൽ ലഭ്യമാക്കുകയാണ് ഞങ്ങളുടെ എല്ലാവരുടെയും ലക്ഷ്യം. ഈ ലക്ഷ്യപ്രാപ്തിക്കായി ഞങ്ങളോടൊപ്പം കൈകോർത്താലും.

സ്നേഹപൂർവ്വം

**ബിഷപ്പ് സെബാസ്റ്റ്യൻ എടയത്തുത്ത്, ചെയർമാൻ**



ആരോഗ്യ ശുശ്രൂഷാരംഗത്തെ ഒരു മാതൃകയായും ആശ്രയമായും ഏവരും പരിഗണിക്കുന്ന ലിസ്സി ആശുപത്രിയുടെ പുതിയ കെട്ടിട സമുച്ചയം ഉദ്ഘാടനം ചെയ്യപ്പെടുന്നുവെന്നത് സന്തോഷകരമായ വാർത്തയാണ്. വളരെ മിതമായ നിരക്കിൽ കാര്യക്ഷമമായവിധം ശുശ്രൂഷ ഏവർക്കും ലഭ്യമാക്കുന്ന ഈ സ്ഥാപനത്തിന്റെ പുതിയ സൗകര്യം വലിയൊരു അനുഗ്രഹമാകും. ഇതിന്റെ പിന്നിൽ അർപ്പണബുദ്ധിയോടെ പ്രവർത്തിച്ച എല്ലാവർക്കും ആശുപത്രിയെ സ്വന്തമായി കണക്കാക്കുന്ന പൊതുജനത്തിനും ഇതൊരു സന്തോഷത്തിന്റെ അവസരമാണ്. ആരോഗ്യ ശുശ്രൂഷാരംഗത്ത് എന്നും ഒരു മാതൃകയും പ്രചോദനവുമായി തുടരാൻ ലിസ്സി സ്ഥാപനങ്ങൾക്കു കഴിയട്ടെയെന്ന് ആശംസിക്കുകയും പ്രാർത്ഥിക്കുകയും ചെയ്യുന്നു.

സ്നേഹപൂർവ്വം

**ബിഷപ്പ് തോമസ് ചക്രത്ത്**



## From the Director's Desk



ആധുനികയുഗത്തിൽ ആരോഗ്യസംരക്ഷണം അതീവ സങ്കീർണ്ണമായ പ്രക്രിയയാണ്. രോഗത്തെ മാത്രമല്ല രോഗിയെയും തിരിച്ചറിഞ്ഞുകിലേ ചികിത്സ ഫലമണിയു. സാമൂഹികവും ശാസ്ത്രീയവും ശാരീരികവും മാനസികവും ആത്മീയവും കാലികവും സാങ്കേതികവുമായ ഒട്ടനവധി ഘടകങ്ങൾ ഒരു വ്യക്തിയെ സ്വാധീനിക്കുന്നുണ്ട്. ഇത്തരൂണത്തിൽ ചികിത്സ വ്യക്ത്യാധിഷ്ഠിതമായി മാറിയെങ്കിലേ ചികിത്സാവിധികൾ യഥാർത്ഥ ഫലം നൽകൂ. ഇവിടെ യാണ് ലിസി എന്ന മിഷൻ ആശുപത്രിയുടെ പ്രസക്തി. സേവനപാതയിൽ അറുപതാണ്ട് ആകുമ്പോൾ ലിസി ആശുപത്രി പുതിയൊരു പന്മാവിലേക്ക് പ്രവേശിക്കുകയാണ്. ആന്തരികവും ബാഹ്യവുമായ ഒരുപാടു സമ്മർദ്ദങ്ങളെ അതിജീവിച്ചാൽ മാത്രമേ ഇന്നത്തെ സാഹചര്യത്തിൽ സമഗ്രമായ ചികിത്സയും തനിമയാർന്ന ആതുരസേവനവും നടത്താനാവൂ. ഇത്തരൂണത്തിൽ ആതുരശുശ്രൂഷയെ കമ്പോളവൽക്കരിക്കുന്നത് തടഞ്ഞുകൊണ്ട് സേവന മേഖലയിൽ നിലനിർത്തുന്നതിന് ലിസി ആശുപത്രിക്ക് സാധിച്ചതിലുള്ള ചാരിതാർത്ഥ്യം ഞാൻ പങ്കുവയ്ക്കുന്നു. എന്റെ ഏറ്റവും എളിയ ഈ സഹോദരന്മാരിൽ ഒരുവന് നിങ്ങൾ ഇത് ചെയ്തു കൊടുത്തപ്പോൾ എനിക്കു തന്നെയാണ് ചെയ്തു തന്നത് എന്ന ക്രിസ്തുവചനത്തിന്റെ പൊരുൾ ഉൾക്കൊണ്ടും നമ്മുടെ സ്വർഗ്ഗീയ മദ്ധ്യസ്ഥയും നാമകാരണവുമായ വിശുദ്ധ കൊച്ചുത്രേസ്യായുടെ സുകൃതങ്ങൾ സ്വന്തമാക്കിയും പ്രവർത്തിക്കാൻ കഴിഞ്ഞതിനാലാണ് ഇതു സാധിച്ചത്.

'ECHO LIS' ലിസിയുടെ പ്രതിധ്വനിയാവണം. പ്രാഗല്ഭ്യവും പ്രതിബദ്ധതയും ഉള്ള നിരവധി ഡോക്ടർമാരും ബിരുദാനന്തര ബിരുദധാരികളായ നേഴ്സുമാരും അർപ്പണമനോഭാവമുള്ള സന്യാസ്തരും ദീർഘവീക്ഷണവും ദൈവിക സ്പർശവുമുള്ള അതിരൂപതാ നേതൃത്വവും ചേർന്ന് ലിസിലിലൂടെ ഒരുക്കിയ ശുശ്രൂഷയുടെ സിംഹമണി ഏറ്റുപാടാൻ ഈ പ്രസിദ്ധീകരണത്തിന് കഴിയട്ടെ.

ഈ ന്യൂസ് ബുള്ളറ്റിൻ ലിസി ആശുപത്രിയുടെ മുഖമൊഴി ആകുമ്പോൾ ഒരു കാര്യം ഉറപ്പാണ്. ആതുരശുശ്രൂഷയുടെ നവീന ആശയങ്ങൾ അകത്തും പുറത്തും ഒരു പോലെ എത്തുകയും ഏറ്റവും മഹത്തരമായ സേവനം എല്ലാ അർത്ഥത്തിലും അളവിലും എല്ലാവർക്കും ലഭിക്കുകയും ചെയ്യും. അറിവ് പ്രദാനം ചെയ്യുന്നതോടൊപ്പം ലിസി കുടുംബത്തിന്റെ ഐക്യവും യശസ്സും ഉയർത്തിപ്പിടിക്കാനും ഇതിന് സാധിക്കട്ടെ എന്ന് ആശംസിക്കുന്നു.

**ഫാ. തോമസ് വൈക്കത്തുപറമ്പിൽ**





## From the desk of Editor-in-chief

Dear Readers,

Warm greetings to you all.....

It is indeed a great honor, to be the Editor-in- chief for the newsletter 'ECHOLIS', and it is an immense pleasure to launch this first issue. ECHOLIS has been conceived as a federating medium to strength and push forward the steadily growing Lisie Medical and Educational Institutions to greater heights. A long standing need for disseminating news and information to our clients, staff, well- wishers and the community at large has been fulfilled. A central component of this issue is a roundup of details of the services rendered at Lisie hospital, which will also act as an aid for instant reference to the public. Forthcoming issues will spotlight our multifaceted activities and events; highlight the talents and facilities available and other topics of general interest. The future success of ECHOLIS depends on your comments, contributions and ideas. We do encourage all of you to try your utmost to enrich the forthcoming issues.

We hope this issue is meaningful to all.

I would like to congratulate the editorial team for their hard work and enterprise in producing the inaugural issue of 'ECHOLIS'.

**Usha Marath**



## Message from Medical Superintendent

Founded in 1956, Lisie Hospital is one of the oldest multispecialty hospitals in Kochi, Kerala, with an exemplary record of matchless expertise and service. The opening of the new block with all the modern facilities will add another dimension to already fully equipped 1000 bed facility, without burdening the common man further, as far as treatment cost is concerned. From a modest beginning in 1956, Lisie Hospital has grown into a full integrated multispecialty hospital with its guiding philosophy to provide medical facilities to the poor & under privileged in the society. The hospital fosters and nurtures health care professionals capable of making a difference, by adhering to human values & professional ethics, which helps them to create a path that are good not only for them, but also good for the society, and the new block facilities will certainly help them in their endeavour which is 'care with love'

**Dr. Babu Francis**



## Message from Nursing Superintendent

I am extremely happy in the venerable event of launching a news letter as a part of the most awaited blessing ceremony of the new block. it is a great honor to be part of this institution and to witness the progress we have achieved as one of the well known and common man friendly hospital .Health care professional requires a great deal of selfless devotion and social commitment and I am immensely happy that each member in the Lisie family has included these values in their care. My heavenly father shower blessings in this endeavor. I extend my heartfelt congratulations and best wishes to all the staff of Lisie hospital in their new venture.

Together as a team, let us march ahead towards our dream of a healthy society.

**Sr. Vida MSJ**





Founded in 1956 and named after St. Terese of Lisieux, Lisie Hospital, one of the oldest multispecialty hospitals in Kerala, was conceived in the minds of visionaries like Arch Bishop of Ernakulam - Most Rev. Dr. Augustine Kandathil and His Eminence Cardinal Joseph Parecattil and has been ably taken forward by Directors committed to service and excellence from the Founder Director V. Rev. Msgr Antony Parackal to the present Director Rev. Fr. Thomas Vaikathuparambil. The hospital is managed by a Board of Trustees drawn from the clergy under the Archdiocese of Ernakulam - Angamaly.

Lisie Hospital is a tertiary care multi-specialty hospital which provides state of the art facilities and infrastructure and is steered by a team of competent and upright doctors and paramedical staff who are inspired and motivated by the management's emphasis on "Care with Love."

Lisie has all the basic clinical and nonclinical departments led by pioneers in their respective fields. The hospital has 25 operation theatres, 11 Intensive care units, 21 dialysis machines undertaking three shifts of Hemodialysis. Among the super specialties, the hospital provides Cardiology, Cardiothoracic Surgery, Neurology, Neurosurgery, Urology and Nephrology, Plastic Surgery and Pediatric Surgery & Gastroenterology services.

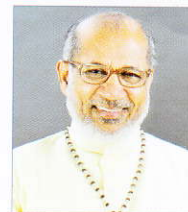
Lisie Medical Institution is recognized by the Medical Council Of India for training Interns and Senior House officers and is accredited by the National Board of examinations for Post graduate training.

It also offers various nursing and paramedical courses.

Lisie Hospital, while aiming at providing world class facilities, has always opened its doors for the poor and downtrodden and will continue to do so, in the years to come, meeting the health care needs of every sections of the society.

## Management

### **Patron**



Card. Mar George Alencherry

### **Chairman**



Mar Sebastian Adayantharath Aux Bishop

### **Director**



Fr. Thomas Vaikathuparambil

### **Assistant Directors**



Fr. Paul Kottackal



Fr. Varghese Assin Thaiparambil

### **Spiritual Directors**

Fr. Vincent Panickaparampil

Fr. Xavier Kidangen

Fr. Praveen Manavalan

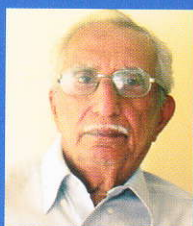


## Mile stones of Lisie Hospital

- ☞ 1956 - Beginning of the hospital with 24 beds
- ☞ 1961 - ANM course
- ☞ 1963 - GNM course
- ☞ 1967 - Out-patient block inaugurated
- ☞ 1970 - Junior Housemanship / Inauguration of Cardinal block, Lisie Pharmaceuticals Physiotherapy & blood bank
- ☞ 1972 - DMLT
- ☞ 1977 - D Pharm / Senior Housemanship
- ☞ 1979 - Lisie chapel was consecrated
- ☞ 1986 - Wholebody CT Scan
- ☞ 1990 - Hospital registered as a Charitable Trust
- ☞ 1992 - Surgical Block
- ☞ 1994 - New dialysis unit
- ☞ 1997 - Neuro ICU
- ☞ 1999 - First kidney transplantation
- ☞ 1999 - Diploma in Dialysis Technology
- ☞ 2001 - Launching of Lisie Heart Institute
- ☞ 2002 - First cardio-thoracic surgery
- ☞ 2002 - First batch B.Sc Nursing
- ☞ 2005 - Anaesthesia technician course
- ☞ 2006 - Blessing of new extension of pharmaceuticals
- ☞ 2008 - Hrudaya Sangamam started
- ☞ 2009 - B.Sc MLT, Anaesthesia and Critical Care Technology, Post Basic Diploma in Cardio Thoracic Nursing
- ☞ 2010 - Renovated OPD and Nephrology Unit
- ☞ 2011 - Renovated Emergency Medicine Department
- ☞ 2011 - M.Sc Nursing Course
- ☞ 2012 - Adoration Chapel / Post Basic B.Sc. Nursing
- ☞ 2012 - New Cath Lab
- ☞ 2013 - Renovated Physical Therapy Department







# My Early Days at Lisie

By Dr. Joseph Kurien

Lisie hospital was the dream of the late archbishop his Grace Dr. Augustine Kandathil. It was ably executed by his successor His Eminence Cardinal Joseph Parecattil, through his lieutenant Mgr Antony Parackal the then procurator of the diocese. He subsequently became and remained for many years the Director of this hospital. The seeds of the hospital were sown in 1956 in a small building by the side of the Railway line with a single doctor and three nursing staff.

The urgent need for better premises prompted the planning and building of the main block which was completed in 1959. It housed 250 beds including reasonably comfortable rooms. Basic specialties started functioning. Department of Medicine under Dr. Saifee, General surgery under Dr. Ganguly ENT, Dr. Ghosh, ophthalmology, Dr.P.M Joseph, Gynecology Obstetrics, Dr. Rachel John and Sr. Lissuex and Dr. MK James in Dental surgery. Dr Thomas Philip was the first medical superintendant. Probably the first time so many full time specialties existed under one roof in the private sector.

I had the privilege of joining the institution in August 1963 when the hospital had a temporary setback, when some of the senior doctors who were not Keralites left to work in their home towns. Nevertheless I was fortunate to have a competent team of doctors in place with Dr. K.V Cherian FRCS, Dr Sushil Banerji FRCS (ENT), Dr. Abdul Azeez DA, Dr. Mrs. Banerji FFARCS. Dr. Rachel John, Sr. Lissuex and Dr.M.K. James however continued to be in the hospital. All of them were responsible in giving the hospital a sound foundation.

Having always worked in big hospitals with extensive facilities in terms of laboratory services, equipments and other infrastructures including senior personnel to fall back on, I initially felt insecure and ill prepared to meet the occasion. But with the strong support I received from my colleagues, nursing staff and management I slowly gained confidence. Work slowly picked up, wards and rooms filled and pressure on admission space gradually increased. The outpatient department housed in the main block also proved inadequate for the large

outpatient crowd and it was therefore decided to build a new outpatient block. It was commissioned in 1967. In addition to providing more outpatient consultation rooms and larger areas for waiting patients, registration and records storing, space was also needed for laboratory services which was accommodated in the first floor. The hospital also by then had a number of resident staff to help the senior consultants. They were accommodated in the second floor.

By this time pressure for beds in the inpatient department became acute and need for expansion mandatory. By 1970 the cardinal block was completed adding about 250 beds. The department of medicine and orthopedics was shifted to the new block. This released a number of beds in the old block to the departments of Surgery, Obstetrics and Gynecology, and Pediatrics thus easing the pressure on their inpatient bed requirement. Though this temporarily fulfilled our need further pressure on beds prompted commissioning of the surgical block at a later date. In the early days the department did not have resident staff. This was partially compensated by competent nursing staff who would give intravenous injections, start infusions and catheterize patient something ordinarily done by resident medical doctors. Besides, most of the sisters in charge of the wards were experienced, mature, committed and hard working. This took a big burden off the doctors because they knew the patients were in safe hands and they would call for our help in appropriate situations. They also had good rapport with the patients and their relatives and many a role of public relations normally carried out by us was taken over by them. Needless to say they were ably led from the front by the nursing superintendent Mother Hyacinth who was present round the clock in the hospital, omnipresent at all important situations and continued to do so till her end. All the three orders Medical sisters of St. Josephs, Sisters of Nazareth and Clarists played very important roles in nursing care and laboratory services. As work picked up, the management added fresh doctors to the departments as residents and junior consultants. This





further improved the quality of care of the patients. It soon became an important tertiary care centre catering not only the city but to a wide area in the surrounding districts. A large number of acutely ill patient were referred to the hospital. This necessitated starting a 24 hour casualty department. The casualty was manned round the clock by casualty medical officers, who in turn were backed up by junior consultants from the other specialty departments. Needless to say the senior consultants were always available to help out if needed. Thus providing an efficient and effective three tier system to take care of acutely ill patients. We soon got recognition for training junior and senior house officers by the Indian Medical council one of the first non teaching hospitals to do so. This assured a steady stream of bright and highly motivated young doctors to strengthen the residency programme. Many of them now hold coveted positions inside and outside the country.

One of the draw backs of working in a non teaching institution was academic stagnation. The management realized this and gave full encouragement to the staff to keep abreast with new development. The departments were sanctioned funds to buy Books and contribute to national and International journals. Each consultant was allowed to attend local and national conferences at hospital expense. It encouraged the doctors to take part in conferences, seminars and CME programmes. Collectively with other local hospitals a clinical society was started where interesting cases were presented and discussed. The Lisie hospital was a popular venue for such meetings. Over the years Lisie hospital was recognized by the National Board to train candidates for examinations in various specialities. Number of candidates trained at Lisie have cleared this exam and are working as consultants in various parts of the country. To assure quality care Lisie hospital always had an excellent laboratory service. Thanks to the hard work and sincerity of the senior technicians (mostly Rev. Sisters) the results were very dependable and prompt and available round the clock. The services were constantly upgraded in liaison with CMC Vellore. As a result the

services were comparable or even better than some of the teaching institutions in the state. The management also realized the importance of non clinical departments and can claim to be one of the first to start full time departments of Pathology, Clinical Pathology, Microbiology and Radiology in the private sector. Facilities for Intensive care, Peritoneal and Hemo dialysis, temporary pacing, Ultrasonography, CT scan, MRI were also started very early at Lisie Hospital

Lisie hospital always looked forward to starting new clinical departments. Dept of thoracic surgery was started as far back as 1965 by erstwhile Dr. T Thomas who was the first Indian to do cardiac surgery. He pioneered cardiac surgery in the state including open Heart surgery. In 1968 Dept of orthopedic surgery was started with Dr. Jacob Zachariah as the head of the Department. Fast on its heels Dr.K.R.B. Varma joined us as the head of the department of Pediatrics Both of them laid foundations to strong departments which grew over subsequent years. In 1972 we lost Sr. Lissuex and the Department was taken over by Dr. Kochuthresia George who had a long and fruitful tenure and built it into a prestigious Department. Subsequently in more recent years departments of Neurology, Neurosurgery, Cardiology, Cardiac Surgery, Urology and Nephrology were started and these continue to be frontline departments in the hospital.

Born by the abiding spirit of Christian charity his eminence Cardinal Joseph Parekattil dedicated the hospital to quality care at affordable cost. This ideology was extended to all irrespective of economic status, caste and creed. It attracted patients from all walks of life. In its early years Chairman of the managing committee His Grace Rt. Rev. Dr Sebastian Mankuzhikary guided the hospital through many difficult times. I have restricted myself to the early years of Lisie hospital. Space does not allow me to recollect many deserving names of people who have made major contribution to the hospital. In subsequent years many more have done this. The pioneering efforts collectively laid a strong foundation to the hospital and its subsequent growth I am sure will not disappoint them.





## Department of General Medicine

Tertiary referral centre with two Senior Consultants, three Junior Consultants and six DNB trainees, the department handles 1,00,000 outpatients and 4,000 inpatients every year. 100 inpatient beds and a full fledged ICU are dedicated for the department. The department provides casualty medical coverage.

**Dr. T.K. Joseph** MD, MRCP, HOD & Senior Consultant

**Dr. A P Johny** MD, Senior Consultant

**Dr. Roja Joseph** MD, Consultant

**Dr. George Xavier** MD, consultant

**Dr. Abhilash Chacko** MD, Consultant

OP Days – All Days (Mon-Sat)

## Diabetology

The Diabetology department at Lisie Hospital specializes in giving economical, comprehensive TOTAL DIABETIC CARE. The department has daily out patient, in patient and emergency work in collaboration with the department of Internal Medicine.

**Initial diagnosis:** Blood investigations based on plasma fasting, post prandial sugars and Glycosylated Hemoglobin.

**Therapeutic interventions:** Latest oral anti diabetic drugs, insulins and analogs and infusion therapy

**Monitoring complication:** Timely assessment of Renal functions, Ophthalmology, Cardiac and Neurological, Peripheral Vascular and Dermatological assessment for diabetic complications.

**Associated Life Style Disorders:** Diagnose and treat Hypertension, Obesity, Lipedemias, Thyroid and Metabolic Bone disorders

**Podiatry (Diabetic footcare):** Podiatrist to assess diabetic foot status, Neurovascular studies and Special Diabetic Atraumatic Microcellular Rubber ( MCR ) footwear provided to patients

**Diabetic Education:** The educator teaches every patient on Diabetes, Insulin injection, Footcare monitoring systemic complications and regular follow up advise.

**Dr. George Paulose** MD, C' Diab Senior Consultant Physician & Diabetologist

**Dr. Betsy Annie Koshy** MD, Dip Diab, Consultant

OP Days – All Days (Mon-Sat)

## Department of General Surgery

With 9,000 major and 6,000 minor surgeries handled per year the department of general surgery is one of the specialty departments of Lisie Hospital . This department has 20-bedded postoperative ICU, 8 bedded surgical ICU and 90 inpatient beds have been reserved exclusively for the department. All kinds of Elective and trauma related emergency services, pediatric, neonatal and plastic surgery, advanced laparoscopic and minimally invasive surgery, benign and malignant diseases of Esophagus, Stomach, intestine, liver, gall bladder diseases and Surgical Jaundice, spleen, and pancreatic disease. Modern management of anorectal diseases like piles, fissures and fistulas. Modern management of Hernias of various kinds (Laparoscopic and Open techniques). Benign and Malignant diseases of Breast, Thyroid and Salivary glands. Lumps and swellings on the body. Bariatric surgeries for morbid obesity. Upper GI Endoscopy, Bronchoscopy, and Colonoscopy. The department is recognized for Post Graduate training for the Dip. N. B. Exam by the National Board of Examinations.

**Dr. Joy J Mampilly** MBBS, MS, MCh (Paediatric Surgery), HOD & Senior Consultant (OP Days - Tue, Thur, Sat)

**Dr. Paulose Jacob** MBBS, MS, MCh (Plastic surgery) Senior Consultant (OP Days - Tue, Thur, Sat)

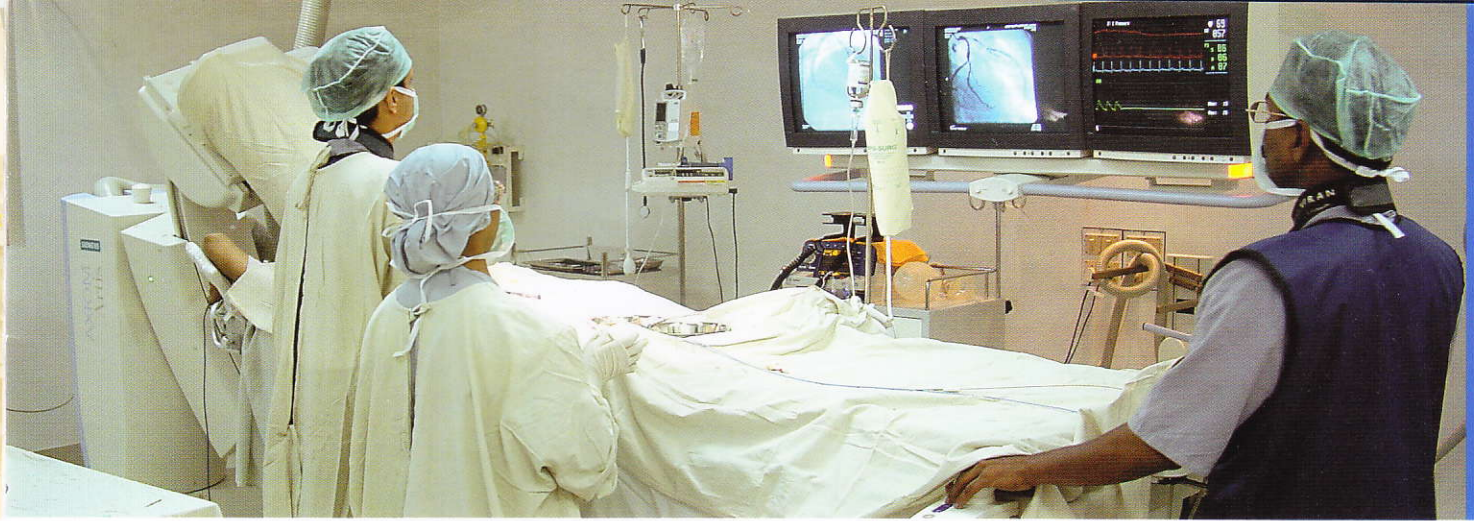
**Dr. Ananthapadmanabhan** MBBS, MS, Dip.Lap.Surgery, FIAGS, Head of Unit I, Senior Consultant (OP Days - Mon, Wed, Fri)

## നെഗ്രോളജി വിഭാഗത്തിന് പുതിയ ആംബുലൻസ്

വ്യക്ത രോഗ ചികിത്സാവിഭാഗത്തിന്റെ സേവനങ്ങൾ വിപുലീകരിച്ച് കൂടുതൽ ജനങ്ങളിലേയ്ക്ക് എത്തിക്കുന്നതിന്റെ ഭാഗമായി ഫെഡറൽ ബാങ്ക് നൂതന സംവിധാനങ്ങളോടുകൂടിയുള്ള ആംബുലൻസ് ലിസി ആശുപത്രിക്ക് സംഭാവന നൽകി.

ഫെഡറൽ ബാങ്കിനും അധികൃതർക്കും നന്ദി രേഖപ്പെടുത്തുന്നു.





## Anaesthesiology

This department works in synchronization with other departments. 10 major and four minor centrally air conditioned operating rooms equipped with latest anesthesia machines, multi channel monitors, ventilators and accessories. The post operative recovery has a bed strength of 25 equipped with multiparameter monitors and ICU Ventilators and experienced staff. Provides ancillary critical care management for 6 bedded neuro surgical ICU, 8 bedded surgical ICU, and a renal transplant ICU. Department consists of 9 full time consultants catering to all major surgical specialties and critical care units

- The department is also accredited for DNB training in anesthesiology for 2 primary and 2 secondary candidates per year.
- The department is conducting a PDDC program in Cardiac Anesthesia a four years degree course in anesthesia technology (BACT) by CMAI-IGNOU bench.

**Dr. Bino George** MBBS, MD (Anaes) HOD & Senior Consultant

**Dr. P. C. Mathew** MBBS, DA, MD(Anaes), Consultant

**Dr. Vandana Iyengar** MBBS, MD (Anaes), Consultant

**Dr. Prema Antony** MBBS, MD (Anaes), DNB Associate Consultant

**Dr. Bindu Pynadath** MBBS, MD (Anaes), Associate Consultant

**Dr. Erin Amey Evan** MBBS, MD (Anaes)

**Dr. Gladson R Thomas** MBBS, DA

**Dr. Ajinu Achi John** MBBS, MD

**Dr. Chinnamma Thomas** MBBS, DA

## ലിസി ആശുപത്രിയിൽ ഗ്യാസ്‌ട്രോ എൻററോളജി



ലിസി ആശുപത്രിയിൽ പുതിയതായി ആരംഭിച്ചിരിക്കുന്ന ഗ്യാസ്‌ട്രോഎൻററോളജി (ഉദര രോഗ ചികിത്സ വിഭാഗം) വിഭാഗത്തിന്റെ തലവനായി ഡോ. തോമസ് ജെയിംസ് ചുമതലയേറ്റു.

## ചാർജെടുത്തു



ട്രോമ കെയർ ശസ്ത്രക്രിയ വിഭാഗത്തിൽ പ്രഗത്ഭനായ ഡോ. കോശി ജോർജ്ജ് എം. ബി. ബി. എസ്, എം. സി. എച്ച് (നൂറോ സർജറി) ലിസി ആശുപത്രിയുടെ നൂറോ സർജറി വിഭാഗത്തിന്റെ തലവനായി ചാർജെടുത്തിരിക്കുന്നു.

## Department of Dermatology

All the skin diseases and disorders are treated at the Dermatology Department. Facilities for skin biopsy, nail biopsy and nerve biopsy, Mole removal and nail removal, Electrocautery and cryo- surgery for warts, molluscum, skin tags, seborrhoeic keratosis and other benign skin tumors, Investigation facilities for fungal scraping and culture, Special treatment for facial pigmentation, Vitiligo, acne, dandruff, hair loss, enitor urinary problems, Leprosy diagnostic facilities, Chemical peeling, facial rejuvenation, derma roller, Special treatment for hair fall, and male pattern alopecia. Facilities for investigation and treatment of sexually transmitted diseases and AIDS.

**Dr. Soman Peter** MBBS, DD, MD (Dermatology), HOD & Senior Consultant  
(OP Days - Mon, Tue, Thu, Fri, Sat)

**Dr. Anjana Manmohan** MBBS  
(OP Days - Mon, Tue, Thu, Fri, Sat)

## Department of Dentistry

Oral & Maxillofacial Surgery which includes treatment for Maxillary and facial bone fractures, tumour surgery of jaws and reconstruction, Orthognathic Surgery. Maxillofacial Prosthodontics which includes fixed partial dentures include ceramic FPD's Ceramic crowns & Vitallium FPDs, dental implants for single tooth & multiple teeth, using IMZ System, Maxillofacial prosthesis resoration of missing teeth, maxillary & mandibular counterparts. Include obturators for cleft palate cases. Flexible Dentures and unbreakable dentures using Valplast & Deflex & Partial dentures. Orthodontics which mainly deals with Orthodontic Appliances - Correction of malocclusion (Crowded teeth), using Begg & straight wire Technology.

**Dr. Bije Raj** BDS, MDS, (Prosthodontist), HOD & Senior Consultant  
(OP Days - Mon to Sat)

**Dr. Jacob Chacko** BDS, MDS, (Maxillofacial), Consultant  
(OP Days - Mon, Tue, Wed, Thu, Sat)

**Dr. Fayaz Hamza** BDS, MDS, (Orthodontics), Consultant  
(OP Days - Fri, Sat)

**Dr. Angela Rose Thomas** BDS (OP Days - Mon to Sat)

**Dr. Franita Mary** BDS (OP Days - Mon to Sat)



## Department of Cardiology

The department of cardiology is a tertiary referral centre for adult cardiology in the state of Kerala, India. The Department of Interventional Cardiology is one of the leading cardiac centers of India, providing comprehensive Interventional diagnostic and therapeutic procedures, including Angiography, Angioplasty, Valvuloplasty, Endovascular interventions and Pacemaker implantations. Facilities available include Digital cardiac cath lab, Rotablator and Atherectomy, Transthoracic and transesophageal echocardiography colour Doppler, Computerised treadmill with 12 lead, 2 D Echo and colour Doppler studies, 24-hour ambulatory holter monitor, 24-hour emergency cardiac care facility, Emergency Cardiac pacing, Multiparameter, multichannel invasive and non-invasive monitoring with central monitoring and web transmission facility, High-end ventilators for each bed, Intra Aortic Balloon pump, Temporary Pacemakers, FFR Measurement and intravascular ultra sound.

- New equipments in Cath Lab - Cath Lab (Siemens Artis Zee) with clear stent technology (first in India) and Volcano-intra vascular ultra sound scan functional flow reserve technology
- Cardiology Research Department works under the drug controller general of India (DCGI) and ICMR regulations for clinical research. The department has completed 4 international multi centre trials and currently 7 trials are in progress.
- Lise Heart Institute is recognized by National Board of Examinations for DNB Cardiology (3 Year Course). Lise Heart Institute is a center for Postgraduate Diploma in Clinical Cardiology Post Doctoral Course by IGNOU.

### Critical Care Ambulance

Lise Hospital provides an ambulance service to transit Cardiac Patients to the hospital for better treatment from various hospitals and centers. The new ambulance is a mobile Critical Care Unit, available 24 hours, 365 days. Available equipments include uninterrupted power supply, cardiac Monitor and defibrillator, pulse Oxymeter, ventilator, Infusion pump, Syringe Pump and Suction apparatus.

**Dr. Rony Mathew** MD, DNB (Med), DM, DNB (Card), FACC, FSCAI, HOD & Senior Consultant (Mon & Sat - Morning, Mon to Fri - Evening)

**Dr. Jacob Joseph** MD, DM, FSCAI Consultant (Tue & Thu - Morning, Mon to Fri - Evening)

**Dr. Jabir Abdullakutty** MD, DM, Consultant (Wed & Fri - Morning, Mon to Fri - Evening)

**Dr. Jo Joseph** MD, DM, Consultant (Mon & Sat - Morning)

**Dr. Ajit Kumar K.R.** MBBS, Senior Registrar (Mon & Thu - Morning)

**Dr. Abey Pothen** MD, Junior Doctor (Tue & Fri - Morning)

**Dr. Ajay Mathew Abraham** MBBS

**Dr. Jobin John** MBBS

**Dr. Santhosh Babu M.** MBBS



## Department Cardiothoracic Surgery

The Department of Cardio Thoracic Surgery was commenced in 2002 with a view of providing facilities of international standards to the patients at an affordable cost. This department has two steel panelled state of the art theatres for Cardiac surgeries with all the attached equipments. The intensive care unit has 12 fully equipped beds and has all the modern supportive equipments and monitoring systems. The department is a high volume center performing more than 1100 open Cardiac Surgeries every year with an excellent surgical and anaesthetic and paramedical backup.

It is worth mentioning that the present team was instrumental in performing the First Total Arterial Bypass surgery program on a beating heart in Kerala. They also lead the Team of doctors who performed the first awake bypass surgery and also the history making Heart Transplantation in the state of Kerala.

- Minimal invasive cardiac surgery
- Bypass surgery on and off pump
- Bypass surgery with Total Arterial Revascularization
- Awake CABG (Without general anaesthesia)
- Redo Bypass surgeries
- All types of valve replacement surgeries
- Tissue and prosthetic Aortic Root replacement surgeries
- Valve repair surgeries
- Surgery for acyanotic congenital cardiac defects
- All types of pulmonary surgeries
- Decortications, Pleurectomies
- Mediastinoscopy, Thoracoscopy
- Video assisted thoracic surgeries (VATS)
- Thymectomy, Mediastinal Tumor surgery

**Dr. Jose Chacko Periappuram** (Padma-shri awardee) FRCS (Glasg), FRCS Ed CTh, HOD & Senior Consultant, (OP Days - Mon to Fri)

**Dr. Bhaskar Ranganathan** MS, MCh, Consultant

**Dr. Jeevesh J Thomas** MS, MCh, DNB

### Cardiac Anaesthesiology

**Dr. Jacob Abraham** MD, PDCC, HOD & Consultant

**Dr. Job Wilson** DA, DNB, PDCC, FPCA, Cardiac Anaesthesiologist

**Dr. Grace Maria George** DA, DNB, PDCC Cardiac Anaesthesiologist

**Dr. Jobi Thomas** MD, PDCC







## Department of Emergency Medicine

The Emergency Department (ED) at Lisie Hospital provides access to accident and emergency care to serve more than 30,000 patients a year. A 24 hour one-stop emergency department for emergencies including resuscitations, critical emergencies and ambulant minor emergencies. The department also manages all types of ear, nose, throat, eye, dental and orthopedic emergencies and also a variety of minor emergencies. In addition the department manages a 3 bedded intensive care unit and an operating room (minor).

**Dr. E. Nisbet Samuel** MBBS, MD Consultant Emergency Physician and HOD

**Dr. Antony V.O.** MBBS, Medical Officer

**Dr. K.V. Thomas** MBBS, Medical Officer

**Dr. K.M. Oommen** MBBS, DCH, Medical Officer (Medico-Legal cases)

**Dr. Rose Mulavarikkal** MBBS, Medical Officer

**Dr. Elizabeth Augustine D.** MBBS, Medical Officer

## Department of ENT

The full fledged ENT department is equipped to do routine checkups and specialized operations. It provides referral and consultancy services to patients. The services provided are in tandem with the requirements of other departments like Neurology, Ophthalmology, Dentistry and Pathology. The highlights of the department are: Direct Laryngoscopy, Oesophagoscopy, Hypopharyngoscopy, Audiometry, Computerised Tympanometry, Speech Evaluation and Speech Therapy.

**Dr. Reena Varghese** MBBS, MS (ENT) HOD & Consultant

(OP Days - Tue, Thu, Sat)

**Dr. Frankie Jose Kavalakkat** MBBS, DLO, Associate Consultant

(OP Days - Mon, Wed, Fri)

**Dr. Jayanthi Pavithran** MBBS, MS (ENT) Consultant

(OP Days - Tue, Thu, Sat)

**Dr. Abhijit Kumar** MBBS, MS (ENT) Consultant (OP Days - Mon, Wed, Fri)



## Department of Nephrology

The Department of Nephrology is equipped with twenty bicarbonate dialysis machines, 24 hours; 7 days a week with DOQI recommended standard of dialysis and dialysis technician training course. Self contained computerized complex consisting of OPD, Pharmacy, Dialysis, ICUs, Theatre, Lab collection to facilitate rapid patient care. Renal transplantation ICU/ Plasma pheresis / CAPD facilities. 35 inpatient beds have been reserved for Nephrology patients. Our dialysis charges are very low as compared to other hospitals in Kerala. Lisie Hospital performs renal transplantation from the year 1999 with international standard result and very affordable rate.

**Dr. Babu Francis** MBBS, MD, DM (Nephro), HOD & Senior Consultant

(OP Days - Mon to Fri)

**Dr. Jose P Paul** MBBS, MD, DM (Nephro), Consultant

(OP Days - Mon to Fri)

**Dr. Sasidharan Pillai** MBBS, Senior Registrar

**Dr. Sunitha Saimon** MBBS, Senior Registrar

**Dr. Kuruvilla K S** MBBS

## Speech Pathology & Audiology

Headed by Babu T Kurian MSc (S & H); MISHA, Post Graduate in Speech & Hearing with 30 years of experience, the department speech pathology & audiology is a blessing to those with incoherent speech and related disorders. The department is equipped to treat or manage congenital problems and problems that occur later due to accidents, emotional stress or shock.

## Department of Neurology

The neurology department has outpatient consultation for six days a week. The well-equipped Neuro ICU at the department is competent to manage emergencies and critical care. Treatment includes Plasmapheresis used to treat several autoimmune diseases. Diagnostic studies like 16 Channel Digital EEG, Nerve Conduction studies and EMG, VEP and BAEP.

**Dr. Vidya M V** MBBS, MD (Med), DNB (Med), DM (Neuro), HOD & Consultant

(OP Days - Mon to Sat)

**Dr. Arun Kumar M L** MBBS, MD, DM (Neuro) Associate Consultant

(OP Days - Mon to Sat)

**Dr. Nidhin V Mathew** MBBS

**Dr. Parvathi Nair** MBBS



## Department of Ophthalmology

Eye care at par with best is available at the Ophthalmology department at Lisie Hospital. Common problems of the eye and major surgeries are done with equal ease. The contact lens clinic functioning under the department is quite popular.

- Facilities for micro surgeries like cataract extraction with Phacoemulsification / SICS
- Keratoplasty (Corneal transplantation)
- Squint correction
- DCR- Endoscopic
- Antiglaucoma Surgery
- Occuloplastic Surgeries
- Contact Lens Clinic

**Dr. Latha Mathew** MBBS, DOMS (Ophthalmology), Sr. Consultant  
(OP Days - Mon, Tue, Thu, Sat)

## Department of Obstetrics & Gynaecology

- Secondary referral Centre
- Department has four senior consultants, two senior residents, and four dip. NB Trainees
- 170 Beds dedicated for the department
- 50,000 outpatients and 10,000 inpatients handled per year
- CTG Monitoring, Laparoscopy, Casualty Services.
- Average 2500 delivery/year and 3000 surgeries

The department is recognized for Post Graduate training for the Dip. N. B. Exam by the National Board of Examinations.

**Dr. Amy D' Souza** MBBS, DGO, MD, HOD & Senior Consultant  
(OP Days - Tue, Thu, Sat)

**Dr. Saramma Esaw** MBBS, MD, Senior Consultant (OP Days - Tue, Thu, Sat)

**Dr. Raja Rajeswari C** MBBS, DGO, DNB, Senior Consultant  
(OP Days - Mon, Wed, Fri)

**Dr. Sr. Ranija** MBBS, MS(Obg), Associate Consultant (OP Days - Mon, Wed, Fri)

**Dr. Susamma George** MBBS



## Department of Psychiatry

The department at Lisie hospital has a more friendly atmosphere where both the patient and family feel secure and united. Treatment for behavioural problems in children and young adults, stress management and treatment for depressive, psychotic and psychosomatic disorders are available here.

- Consultation-Liaison service to other departments
- Management of anxiety, depression, adjustment disorders and other major Psychiatric disorders
- Management of childhood problems like enuresis and behavioral disorders.
- Detoxification of addicts and maintenance of abstinence through medical and psychological help
- Behavioral modification therapy
- Relaxation training

**Dr. Kuruvilla Thomas** MBBS, DPM, MD (Psychiatry), Senior Consultant  
(OP Days - Mon to Sat after 4pm)

**Child Psychiatry:** Dealing with behavioural problems, Learning disabilities and problems of differently abled children.

**Dr. Sitalakshmi George** MBBS, DPM, MD (Psychiatry)  
(OP Days - Wed & Sat 10 am to 1pm)

## Paediatrics & Neonatology

Children and infants are future of a nation. The Paediatric & Neonatology wing of Lisie Hospital provides expert care for the future citizens of the country. The hospital has a level 2 neonatal ICU with incubators and phototherapy units. Is ever prepared for emergencies. All major immunizations are also done here.

- General Ward & Private rooms for general paediatric patients
- Level 2 neonatal ICU with incubators and phototherapy units -CPAP
- 40,000 outpatients and 5000 inpatients are handled per year
- Round-the-clock casualty emergency services
- Facilities available for all immunizations

**Dr. Margret Joseph** MBBS, DCH, HOD & Sr. Consultant  
(OP Days - Mon to Sat)

**Dr. Rohin Abraham** MBBS, MD(Paed), Fellowship Neonatology, Associate Consultant, (OP Days - Mon to Sat)

**Dr. Sr. Sudha** MBBS, DCH, Consultant (OP Days - Mon to Sat)

**Dr. Jessy Thomas** MBBS, MD (Neonatology), (OP Days - Mon to Sat)



## Orthopaedic Department

Orthopaedic Department is one of the most advanced departments at the hospital. It handles everything in the purview of orthopaedics including lumbar spine procedures. The latest technologies are utilized to give treatment to the musculo skeletal problems. Rheumatism, Arthritis, Multiple fractures, congenital problems, age related problems, osteoporosis, accidents etc are handled with care and compassion

### Orthopaedic Surgeries Includes:

- Arthroscopic, Arthrotomy / Endoscopic Surgery of all amendable joint
- Peripheral nerve surgery
- Excision of bone or soft tissue tumours (benign, e.g. Osteochondroma, enchondroma, ganglion)
- Osteotomy closed and osteotomy open (Excluding open osteotomy of major bones i.e., femur, tibia pelvis etc
- Synovectomy
- Bone Biopsy
- Bone grafting non-union of fractures and pseudarthroses
- Joint Manipulation
- Removal of Internal & External Fixation
- Osteotomies of long bones
- Tendon repairs and reconstructions
- Open and closed fracture reduction (Including major procedures e.g., Pelvis, Femur, acetabulum, Spine )
- Fasciotomy and Fasciectomy
- Bone graft
- Arthroplasty
- Endoscopic / open discetomy
- Total Hip Replacement
- Total Knee replacement
- Carpal tunnel release

**Dr. K Rajaram** MS (Ortho), MNAMS, HOD & Senior Consultant  
(OP Days - Tue, Thu, Sat)

**Dr. Suresh Paul** MS (Ortho), FRCS, Senior Consultant  
(OP Days - Mon, Wed, Fri)

**Dr. Biju P A** MS (Ortho) (OP Days - Tue, Thu, Sat)

### ഫിസിക്കൽ തെറാപ്പി വിഭാഗം ആശീർവദിച്ചു

2013 മാർച്ച് 05 തീയതി അഭിവന്ദ്യ മാർ സെബാസ്റ്റ്യൻ എടയന്ത്രത്ത് പിതാവ് നവീകരിച്ച ഫിസിക്കൽ തെറാപ്പി യൂണിറ്റ് ആശീർവദിച്ചു.

ഏഴ് ട്രീറ്റ്മെന്റ് ക്യാമ്പിനും ഒരു കൺസൾട്ടിംഗ് റൂമും മൾട്ടി ജിം ഹാളും ഉൾപ്പെടെ നൂതന സംവിധാനങ്ങളും ആധുനിക ഉപകരണങ്ങളോടും കൂടിയ ഫിസിക്കൽ തെറാപ്പി യൂണിറ്റാണ് ഇപ്പോൾ നിലവിലുള്ളത്.

## നേട്ടങ്ങളും സേവനങ്ങളും

ഔട്ട് പേഷ്യന്റ് വിഭാഗത്തിൽ വർഷംതോറും മൂന്നര ലക്ഷത്തോളം രോഗികളും, ഇൻ പേഷ്യന്റ് വിഭാഗത്തിൽ അൻപതിനായിരത്തോളം രോഗികളും ചികിത്സ തേടി എത്തുന്നു.

പുറയശസ്ത്രക്രിയ വിഭാഗത്തിൽ ഏതാണ്ട് 1100 ഓളം പുറയം തുറന്നുള്ള ശസ്ത്രക്രിയയും 1300 ഓളം ആൻജിയോപ്ലാസ്റ്റിയും നടത്തപ്പെടുന്നു.

വർഷംതോറും ഏകദേശം പതിനൊന്നായിരം മേജർ ശസ്ത്രക്രിയകളും ആറായിരം മൈനർ ശസ്ത്രക്രിയകളും നടത്തുന്നു.

1999 ൽ ആരംഭിച്ച നെഫ്രോളജി വിഭാഗത്തിന്റെ ആഭിമുഖ്യത്തിൽ ഇപ്പോൾ വർഷംതോറും അൻപതോളം കിഡ്നി മാറ്റിവയ്ക്കൽ ശസ്ത്രക്രിയ നടത്തുന്നു.

### സേവനങ്ങൾ

24 മണിക്കൂറും പ്രവർത്തിക്കുന്ന ആധുനിക സൗകര്യങ്ങളോടുകൂടിയ എമർജൻസി വിഭാഗം / ട്രോമാ കെയർ

24 മണിക്കൂറും പ്രവർത്തിക്കുന്ന ബ്ലഡ് ബാങ്ക്.

30 - ൽ പരം ചികിത്സാവിഭാഗങ്ങൾ.

25 - ഓളം ഓപ്പറേഷൻ തീയറ്ററുകൾ.

നവീന സജ്ജീകരണങ്ങളോടുകൂടിയ ഗ്യാസ് ട്രോ എൻറോളജി (ഉദര രോഗ വിഭാഗം) വിഭാഗം.

പുറയം മാറ്റി വയ്ക്കൽ ശസ്ത്രക്രിയയ്ക്കു സജ്ജം.

ആധുനിക നിയോനേറ്റൽ ഐ.സി.യു.

മൊബൈൽ ഫ്രീസർ സൗകര്യത്തോടുകൂടിയുള്ള മോർച്ചറി സംവിധാനം.

സുപ്പർ സ്പെഷ്യാലിറ്റി സേവനങ്ങൾക്ക് ഇ.എസ്.ഐ (ESI) അംഗീകൃതം





## Department of Neurosurgery

One of the super specialties in the hospital, Department of Neurosurgery is well equipped with operation theatre, ultramodern operating microscope, two ICUs with multiparameter monitors and ICU Ventilators; one ICU dedicated exclusively for postoperative patients. The department has experienced staff for better care with Love. 500 major operations and 250 minor operations are done every year.

- Microsurgery for all brain and spine problems like skull base surgery aneurysm clipping and excision of arteriovenous malformation.
- Excision of all varieties of brain tumours including skull base tumours, spinal tumours.
- Endoscopic resection of pituitary tumours through nose
- Instrumentation of vertebral column for patients with fracture spine
- Stabilization of skull and vertebral column in case of dislocations
- Surgery for congenital malformation of skull and spine column
- Ultramodern operating microscope
- Intra - operative DSA
- Midas Rex drill system
- Ventriculoscope
- Endoscopic lumbar discectomy

**Dr. Koshy George** MBBS, Mch, HOD & Sr. Consultant  
(OP Days - Tue, Thu, Sat)

**Dr. C.I. Johnson** MS, Mch, Consultant (OP Days - Mon, Wed, Fri)

**Dr. Dalvin Thomas** MS, Mch, Consultant

## Department of Pulmonology

Deals with respiratory related conditions like Bronchial Asthma, COPD (Chronic Obstructive Pulmonary Disease), Pneumonia, Interstitial Lung Diseases, Allergy, Pleural diseases, sleep related disorders, & other systemic lung diseases.

- Pulmonary function tests ( Spirometry)
- Fibre optic Bronchoscopy and related procedures
- Ventilators ( both invasive/ non-invasive )
- Polysomnograph (sleep study)
- Pulmonary function testing
- Bronchoscopy - Bronchial Wash
- Broncho alveolar lavage
- Trans bronchial biopsy
- Trans bronchial needle aspiration
- Other endobronchial procedures
- Allergy testing and immunotherapy
- Respiratory intensive care related procedures
- Sleep related disorder studies (polysomnography)
- Imaging guided procedures
- Intercostal tube drainage (for the treatment of pneumothorax, empyema and other pleural diseases)
- Pulmonary Rehabilitation

**Dr. Praveen Valsalan K** MBBS, MD (Respiratory Medicine), FCCP,  
Consultant (OP Days - Mon to Sat)



## Department of Urology

Urology department has facilities for all types open urological surgeries including urological cancer, kidney transplantation surgery, ESWL, Upper and lower urinary tract endoscopic surgery like PCNL, URS, LITHOLAPEXY / LITHOTRIPSY, TUR. Large numbers of prostate surgery (TURP) cases are successfully done in the department. Facilities for Lithotripsy for removal of kidney / urethral stone are also available. 65 inpatient beds have been reserved for Uro patients. 2,500 minor and 1250 major operations per year. Kidney transplantations are successfully done here.

### Prostrate Diseases

- Radical Prostatectomy (both open and laparoscopic)

### Renal Diseases

- Partial, Simple, Radical nephrectomy

### Ureter diseases

- Pyeloplasty (both open and laparoscopic)
- Uretral reimplantation for vesicolateral reflux
- Uretral replacement surgeries

### Penile & Urethral Surgeries

- Partial & total penectomy, Penile implants

### Female Urology

- TVT- O
- Cystocele rectocele repairs
- Burch colposuspension (both open and laparoscopic)
- Renal transplantation

**Dr. Damodaran Nambiar** MS, MCh (Uro), HOD & Senior Consultant  
(OP Days - Mon, Wed, Fri)

**Dr. Viju George** MS, FRCS (Glas), DNB, MCh (Uro), Associate Consultant  
(OP Days - Tue, Thu in the Evening & Sat in the Morning)

**Dr. Aby Madan** MS, MCh (Uro), Associate Consultant  
(OP Days - Tue, Thu in the Morning & Sat in the Evening)

**Dr. Highness** MBBS

## Department of Gastroenterology

Equipped with latest video endoscopes, facilities are available for Diagnostic & Therapeutic Upper & Lower Gastro Intestinal Endoscopies, Management of Liver Diseases. Facilities are also available for Emergencies with services of a full time Gastroenterologist. Shortly facilities of Biliary Endoscopies (ERCPS) will be available.

**Dr. Thomas James** MBBS, MD, DM Sr. Consultant  
(OP Days - Mon to Sat)

## Department of Radiology

Started as a small single room X ray unit, Has over the years transformed into a full fledged hitech state of heart radiology department. Procedures - Xrays using Computed Radiography, Portable Xrays, Contrast studies Fluoroscopy, Ultrasound, Colour Dopler and CT Scan. Computerised electronic network whereby digital images are viewed on monitors in conjunction with the clinical details.

**Dr. Maggie Xavier** MBBS, DMRD, Consultant

**Dr. Cebi Punchakonam Baby** MD RD, Consultant

## Department of Physical Therapy And Rehabilitation

The Department of Physical Therapy was established in 1970 by His Eminence Joseph Cardinal Parecattil, Arch Bishop of Ernakulam. Our Department has been equipped with the Advanced modalities having the latest cutting edge technology. The modalities in use at the Department includes.

Electrotherapy | Combination Therapy | Interferential Therapy | Nerve Stimulation | Ultrasound | Shortwave Diathermy | Muscle Stimulation | Traction (Lumbar/Cervical) Continuous Passive Movement Machine (CPM) | Heat Therapy | Infra red deep heat therapy | Paraffin Wax Therapy Cryotherapy | Laser therapy | Therapeutic Exercise Equipment | Rehabilitation Fitness equipment

Physical Therapists practice in many specialities including Orthopaedics, Neurology, Neurosurgery, Cardio-pulmonary, Geriatrics, Paediatrics to name some of the common areas. New facilities in Physical Therapy Unit- Equipped with the most modern physical therapy treatments like exercise therapy, manual therapy, electro therapy.

## Department of Laboratory Medicine

Laboratory department is perhaps one of the most important departments as it is here where disease gets diagnosed. All the other departments avail the service of Laboratory. Histopathology, Cytology, Blood Bank, Biochemistry, Clinical Pathology, Haematology and Microbiology are the divisions functioning in the department.

- Clinical Pathology and Haematology : Blood and bone marrow studies done equipped with automated blood cell counters – Sysmex XT 2000i, Sysmex KX 21.
- Biochemistry : Fully equipped with sophisticated instruments like Roche Modular EVO P800, Hitachi - 902, Elecsys 2010, Cobas e 411, etc
- Cytology : All cytological investigations including nearly 2000 FNAC done per year.
- Microbiology : All routine stains and cultures and sensitivity, AFB and fungal cultures done. Serological tests: Lepto, Dengue, Elisa, Widal, RA, VDRL, Paulbunnell.
- Blood Bank : One of the oldest licensed blood banks in the state, with an annual turnover of about 2500 units per year.
- Histopathology: Examines and reports on an annual turnover of over 6000 surgical specimens including referrals from other hospitals and medical centres.

**Dr. Sushil Chandi** MBBS, MD (Pathology), Ph D, HOD & Senior Consultant

**Dr. Soumini Unnikrishnan** MBBS, DCP, Consultant

**Dr. Vinod Xavier** MBBS, MD (Micro Biology)

**Dr. Leny Samuel** MBBS, DCP



# Supporting Services

## Department of Bio Medical Engineering

The Department of Biomedical Engineering manages all the Medical equipments in Lisie Hospital. The health providers get assistance from the Biomedical engineer for the acquisition of technology, ensuring its safe, continued efficient utilization through a well planned program of user training, maintenance and quality assurance, playing a vital role in the safe and effective implementation of health care technology. Department of Biomedical Engineering provides safe, calibrated and operational equipment for delivery of the best health care possible reducing the inconvenience and frustration caused by malfunctioning equipment and the time lost because of non-availability of equipment.

**Bio Medical Engineer: Mr. Joji Mathew**

## Department of Chaplaincy

Lisie Hospital has been rendering quality health care with love to the sick and the suffering with a view to making them fully alive. This includes the medical well as the spiritual assistance. The spiritual care that has been given to the patients by committed spiritual fathers over the past five decades now stands organized and systematized in a better way in order to cater the emerging needs. This department of chaplaincy is constituted of three resident priests, two from the Archdiocese of Ernakulam-Angamaly and one from a religious congregation. It also includes two resident sisters who are trained in counseling and spiritual direction. The department of chaplaincy plans and coordinates all the spiritual care and ministries to the patients in the hospital. It also organizes seminars, workshops, classes etc for the hospital staff in order that they be inspired and trained to develop an integrally human vision of illness and to know how to engage in an approach to the sick, which is entirely human. The Healthcare Chaplain, an integral member of the healthcare team, makes daily rounds and is available 24-hours a day to provide pastoral care for patient's bystanders, family and staff. The Chaplain is available twenty-four hours to provide objective crisis intervention and competent spiritual support.

## Department of Dietetics

The dietician is a person with legally recognized qualification in nutrition and dietetics who applies the

science of nutrition to the feeding and education of individuals in health and disease. Nutritional assessment of patients is done and advice is given based on the assessment and life style of the patient by complying with physicians order. Group sessions are conducted for patients and their attendants in order to reinforce messages and clear doubts through discussion. We clarify nutrition related doubts on telephone. The hospital dietary services provide meals to the inpatients based on their nutritional requirements and we monitor and evaluate food service system and standards of sanitation. Low fat, low salt, low cholesterol, diabetic diet, renal diet, reducing diet and up building diet a special feeding regimen like tube feeding are some of the concerns of patients. The department's operational time begins at 06.00 am and ends at 07.00pm. and the Nutrition and dietetics clinic hours is from 09.00am to 01.00pm and 02.30pm to 06.00pm. The department provides nutrition and dietary classes to nursing students and gives six months practical training to the dietetic students after completing the course.

## Department of Medical Social Work

Medical Social Work Department was established on October 25th 2010. Initially the department was started with four medical social workers and now it's extended to five. The primary objective of medical social worker is to educate patients and their bystanders to cope up with the disease condition and counseling for clients who do not comply with treatment. We offer immense support and assistance to patients and their families who may be experiencing psychological, social or emotional difficulties during their hospital stay.

## Pharmaceutical Department

In 1970, a drug manufacturing unit was attached to the hospital's pharmacy for providing quality medicines at a moderate cost to the patients. The unit has been approved by the drugs controller for the manufacture of Narcotic drugs like Pethidine, Morphine, Fentanyl citrate etc. Morphine Tablets are manufactured and supplied to all pain and palliative care clinics of Kerala. We are proud to announce that we also had lent a helping hand for the Palliative Care Initiative in Kerala in a humble way. We are somehow managing the supply of this highly





controlled drug without much interruption to all the needy patients at a very reasonable cost since we started the manufacture.

### Department of Information Technology

The Department of Information Technology in Lisie Hospital has latest technologies to manage and maintain the systems with professional and quality services in the health care delivery system. IT Department provides support for the use and development of information and communications technologies to facilitate and expedite the patient services. Lisie Hospital has a comprehensive and complex IT infrastructure, which includes a fleet of approximately 200 systems. Extensive local area networks (LAN) across each of the floors, a wide area network (WAN) connecting the PC's and approximately 8 servers. Staff in the Technology and Operations team are technically trained and experienced to provide support and administration for this infrastructure. As new applications are implemented or existing applications upgraded IT provides training services to meet the needs of all staff with round the clock IT team presence.

Various integrated Modules involved in IT enabled patient services like: Front Office, Ward Management, Pharmacy Management, Financial Accounting & Billing, CR & Pacs Management (Radiology Management), Lab management, Central Stores Management, Operational Theatre Management, Equipment Management, Case Paper and consultant Module - Discharge summary Management. All these HIS services has certainly facilitates the patient services with utmost care and

timely way in the hospital so as to meet 1000 bedded hospital to keep and support better health care delivery system in today's modern world.

**IT Department in Charge: Jijo Chacko**

### Department of Nursing Service

Nursing service is the part of total health organization which aims at satisfying the nursing needs of the patient/ community.

#### Objectives of nursing in ward

- Maximum comfort and happiness by way of pleasant surroundings
- Qualitative / comprehensive care to the patient
- Care based on the patient's needs
- Accurate assessment of illness.
- Adequate material resources at all times.
- Health education to the patient & attendants.
- Managerial skills as and when required.
- Privacy at all levels.

**Nursing Superintendent: Sr. Vida MSJ**

Deputy Nursing Superintendent: Sr. Simon

Asst. Nursing Superintendent: Sr. Rachel

There are 53 Head Nurses and 620 staff nurses including BSc nurses & Diploma nurses. We follow three shift duty schedule and maintain adequate nurse patient ratio in all shifts.



# Academic Activities

## DNB Training

Department	Session	Requirement	Seats
General Medicine	January	MBBS & CET	2 seats
Orthopedics	January	MBBS & CET	1 seat
		MBBS & D'Ortho	1 seat
Cardiology	January	MD & CET	2 seats
Anesthesiology	January	MBBS & CET	2 seats
		MBBS & DA	2 seats
General Surgery	July	MBBS & CET	2 seats

Post Graduate Diploma in Clinical Cardiology (Post Doctoral Course by IGNOU)

PDCC in Cardiac anaesthesiology-One-year postdoctoral certificate course in Cardiac Anaesthesiology and Critical Care Medicine.

3-day observatory program in Cardiac Surgery for Junior Doctors and Postgraduates.

MCI has recognized Lisie Hospital as a centre for Senior and Junior House Surgency.

## Nursing

Lisie Medical and Educational institutions is committed to the cause of quality education for health professionals. As part of its vision, it conducts following courses for nursing:

- GNM -General Nursing- Three and a half year course with 50 seats
- B.Sc Nursing – Four year course with 50 seats
- Post Basic B.Sc Nursing- Two years course with 30 seats
- M.Sc Nursing- Two years course with 18 seats
  - Medical- Surgical Nursing- 4 seats
  - Obstetrics and Gynecologic Nursing-4 seats
  - Mental Health Nursing- 5 seats
  - Child Health Nursing -5 seats
- Post Basic Diploma in Cardiothoracic Nursing: One year course with 15 seats

All the above courses are approved by Kerala Nurses and Midwives Council and Indian Nursing Council. Students of these courses get ample exposure to different specialties of medicine as they are trained at the hospital.

## Other Courses

**Diploma Course in Pharmacology (D.Pharm):** Two year Diploma Course in Pharmacology approved by the Pharmacy Council & AICTE with 30 seats.

**Anaesthesia Technician Course (B.Sc.):** Anaesthesia department is conducting a four years degree course in Anaesthesia Technology approved by IGNOU

**B.Sc. MLT Course:** Lisie Hospital is conducting a four years degree course in Medical laboratory Technology by IGNOU

**D MLT Course:** Lisie Hospital is conducting a Diploma course in Laboratory technology run by the CMAI

**Dialysis Technician Course:** Lisie Hospital is conducting a Diploma course in Dialysis technology run by the Directorate of Medical Education, Govt of Kerala



# വിവിധ ചികിത്സാ വിഭാഗങ്ങളും ഒ.പി. ദിവസങ്ങളും

## ജനറൽ മെഡിസിൻ

ഡോ. ടി.കെ. ജോസഫ്	(തിങ്കൾ - ശനി)
ഡോ. എ.പി. ജോണി	(തിങ്കൾ - ശനി)
ഡോ. ജോർജ്ജ് സേവ്യർ	(തിങ്കൾ - ശനി)
ഡോ. റോജ ജോസഫ്	(തിങ്കൾ - ശനി)
ഡോ. അദിലാഷ് ചാക്കോ	(തിങ്കൾ - ശനി)

## ഡയബറ്റോളജി വിഭാഗം (പ്രമേഹ രോഗ ചികിത്സാ വിഭാഗം)

ഡോ. ജോർജ്ജ് പൗലോസ്	(തിങ്കൾ - ശനി)
ഡോ. ബെറ്റിസി ആനി കോശി	(തിങ്കൾ - ശനി)

## പൾമനോളജി (ശ്വാസകോശ രോഗ വിഭാഗം)

ഡോ. പ്രവീൺ വത്സലൻ	(തിങ്കൾ - ശനി)
-------------------	----------------

## ജനറൽ സർജറി വിഭാഗം (ശസ്ത്രക്രിയ വിഭാഗം)

ഡോ. ജോയി മാമ്പിള്ളി	(ചൊവ്വ, വ്യാഴം, ശനി)
ഡോ. പൗലോസ് ജേക്കബ്	(ചൊവ്വ, വ്യാഴം, ശനി)
ഡോ. അനന്തപത്മനാഭൻ	(തിങ്കൾ, ബുധൻ, വെള്ളി)

## പീഡിയാട്രിക്സ് (ശിശു രോഗ വിഭാഗം)

ഡോ. മാർഗരറ്റ് ജോസഫ്	(തിങ്കൾ - ശനി)
റവ. ഡോ. സി. സുധ	(തിങ്കൾ - ശനി)
ഡോ. റോഹിൻ എബ്രഹാം	(തിങ്കൾ - ശനി)
ഡോ. ജെസി തോമസ്	(തിങ്കൾ - ശനി)

## ബെസ്റ്റിക്സ് & ഗൈനക്കോളജി (സ്ത്രീ രോഗ വിഭാഗം)

ഡോ. എയ്മി ഡിസൂസ	(ചൊവ്വ, വ്യാഴം, ശനി)
ഡോ. സാനാജി ഇഴശ്ശേ	(ചൊവ്വ, വ്യാഴം, ശനി)
ഡോ. രാജരാജേശ്വരി	(തിങ്കൾ, ബുധൻ, വെള്ളി)
ഡോ. സി. റാണിജ	(തിങ്കൾ, ബുധൻ, വെള്ളി)

## തൃക്ക് രോഗ വിഭാഗം (വെർമറ്റോളജി)

ഡോ. സോമൻ പീറ്റർ	(തിങ്കൾ, ചൊവ്വ, വ്യാഴം, വെള്ളി, ശനി)
ഡോ. അഞ്ജന മൻമോഹൻ	(തിങ്കൾ, ചൊവ്വ, വ്യാഴം, വെള്ളി, ശനി)

## ഫെർട്ടിലിറ്റി (നേത്ര രോഗ വിഭാഗം)

ഡോ. ലത മാത്യു	(തിങ്കൾ, ചൊവ്വ, വ്യാഴം, വെള്ളി, ശനി)
---------------	--------------------------------------

## ഇ.എൻ.ടി (ബി.പി, മൂക്ക്, തൊണ്ട വിഭാഗം)

ഡോ. റീന വർഗ്ഗീസ്	(ചൊവ്വ, വ്യാഴം, ശനി)
ഡോ. ഫ്രാങ്കി ജോസ്	(തിങ്കൾ, ബുധൻ, വെള്ളി)
ഡോ. ജയന്തി പവിത്രൻ	(ചൊവ്വ, വ്യാഴം, ശനി)
ഡോ. അഭിജിത് കുമാർ	(തിങ്കൾ, ബുധൻ, വെള്ളി)

## ഓർത്തോപീഡിക്സ് (അസ്ഥി രോഗ വിഭാഗം)

ഡോ. കെ. രാജാറാം	(ചൊവ്വ, വ്യാഴം, ശനി)
ഡോ. സുരേഷ് പോൾ	(തിങ്കൾ, ബുധൻ, വെള്ളി)
ഡോ. ബിജു പി.എ.	(ചൊവ്വ, വ്യാഴം, ശനി)

## സൈക്യാട്രി (മാനസിക രോഗ വിഭാഗം)

ഡോ. കുരുവിള തോമസ്	(തിങ്കൾ - ശനി 4 മണിക്ക് ശേഷം)
-------------------	-------------------------------

## ചൈൽഡ് സൈക്യാട്രി (ശിശു മാനസിക രോഗ വിഭാഗം)

ഡോ. സീതാലക്ഷ്മി ജോർജ്ജ്	(ബുധൻ & ശനി 10 - 1)
-------------------------	---------------------

## കാർഡിയോളജി (ഹൃദയരോഗ വിഭാഗം)

ഡോ. റോണി മാത്യു	(തിങ്കൾ & ശനി am, തിങ്കൾ - വെള്ളി pm)
ഡോ. ജേക്കബ് ജോസഫ്	(തിങ്കൾ & വ്യാഴം am, തിങ്കൾ - വെള്ളി pm)
ഡോ. ജാബിർ അബ്ദുള്ളകുട്ടി	(ബുധൻ & വെള്ളി am, തിങ്കൾ - വെള്ളി pm)
ഡോ. ജോ ജോസഫ്	(തിങ്കൾ & ശനി am)
ഡോ. അജിത് കുമാർ കെ.ആർ.	(തിങ്കൾ & വ്യാഴം am)
ഡോ. എബി പോത്തൻ	(തിങ്കൾ & വെള്ളി am)

## കാർഡിയാക് സർജറി (ഹൃദയ ശസ്ത്രക്രിയ വിഭാഗം)

ഡോ. ജോസ് ചാക്കോ പെരിയപുറം(തിങ്കൾ - വെള്ളി)	
ഡോ. ദാസ്കർ രംഗനാഥൻ	(തിങ്കൾ - വെള്ളി)

## ഗ്നാസ്ട്രോ എന്ററോളജി (ഉദര രോഗ വിഭാഗം)

ഡോ. തോമസ് ജെയിംസ്	(തിങ്കൾ - ശനി)
-------------------	----------------

## നെഫ്രോളജി (വൃക്ക രോഗ വിഭാഗം)

ഡോ. ബാബു ഫ്രാൻസിസ്	(തിങ്കൾ - വെള്ളി)
ഡോ. ജോസ് പി. പോൾ	(തിങ്കൾ - വെള്ളി)

## യൂറോളജി വിഭാഗം

ഡോ. ദാമോദരൻ നമ്പ്യാർ	(തിങ്കൾ, ബുധൻ, വെള്ളി)
ഡോ. വിജു ജോർജ്ജ്	(ചൊവ്വ & വ്യാഴം pm, ശനി am)
ഡോ. എബി മാടൻ	(ചൊവ്വ & വ്യാഴം am, ശനി pm)

## നൂറോളജി വിഭാഗം (മസ്തിഷ്ക രോഗ വിഭാഗം)

ഡോ. വിദ്യ എം.ബി.	(തിങ്കൾ - ശനി)
ഡോ. അരുൺകുമാർ എം.എൽ	(തിങ്കൾ - ശനി)

## നൂറോ സർജറി വിഭാഗം (മസ്തിഷ്ക ശസ്ത്രക്രിയ വിഭാഗം)

ഡോ. കോശി ജോർജ്ജ്	(ചൊവ്വ, വ്യാഴം, ശനി)
ഡോ. സി.ഐ. ജോൺസൻ	(തിങ്കൾ, ബുധൻ, വെള്ളി)

## ഡെന്റൽ വിഭാഗം (ദന്തരോഗ വിഭാഗം)

ഡോ. ബിജി രാജ്	(തിങ്കൾ - ശനി)
ഡോ. ജേക്കബ് ചാക്കോ	(തിങ്കൾ, ചൊവ്വ, ബുധൻ, വ്യാഴം, ശനി)
ഡോ. ഫയസ് ഹംസ	(വെള്ളി & ശനി am)
ഡോ. എയ്ബല റോസ്	(തിങ്കൾ - ശനി)
ഡോ. ഫ്രെനീറ്റ മേരി	(തിങ്കൾ - ശനി)



## Floor Plan in the New Block

### Basement Floor

Car Parking

### Ground Floor

Entrance Lobby, Registration, Record Room, Cardiology OP, Pharmacy, Blood collection  
Echo & TMT and Radiology, Insurance Desk

### First Floor

OPD Consulting Rooms - 43

### Second Floor

Administration, OPD Consulting Rooms - 10, CSSD

### Third Floor

Labs, Blood Bank

### Fourth Floor

Operation Theatres, Post operative ICU

### Fifth Floor

Service Floor, Surgical ICU

### Sixth Floor

Labour Room, Labour Theatre, Labour ICU - 6 beds

### Seventh Floor

Ward - 15 beds, Rooms - 12, VIP Rooms - 1, NICU - 18 beds, Paediatric ICU

### Eighth Floor

Ward - 18 beds, Rooms - 20, VIP Room - 1, Suit Room-2

### Ninth Floor

Ward - 18, Rooms - 20, VIP Room - 1, Suit Rooms - 2

### Tenth Floor

Ward - 18 beds, Rooms - 16, VIP Rooms - 1, Suit Rooms - 4

## Certifications and Accreditations

Recognized by the Govt. of Kerala for the treatment of State Govt. Employees and their dependants.

Empanelled by the Prime Minister's Office for availing Prime Ministers National Relief Fund.

Empanelled In Karunya Benevolent Scheme.(for Nephrology,neurology&neurosurgery)

ECHS

Certified by the State Govt. for kidney transplant.

ESI Empallment for super speciality services.

Certified as Baby Friendly Hospital.

NABH

National Accreditation Board for Hospitals & Healthcare is a constituent board of quality council of India set up to establish and operate accreditation programme for health care organizations. The board is structured to cater to much desired needs of the consumers and set benchmark for progress for health industry.

Lisie hospital has started working for NABH accreditation process in September 2011. 13 committees are formed to work with the various processes of accreditation. Completed two phases covering up gap analysis and documentation. We are working in the third phase.





Ernakulam North, Kochi - 682 018, Kerala, India  
Ph: 0484 2402044, 2400812, Fax: 0484 2403877  
Email: [contact@lisiehospital.org](mailto:contact@lisiehospital.org), Web: [www.lisiehospital.org](http://www.lisiehospital.org)